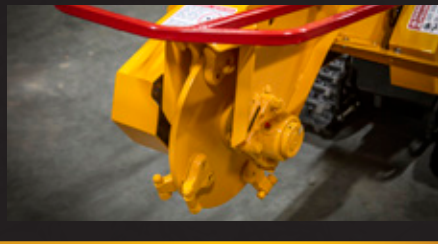


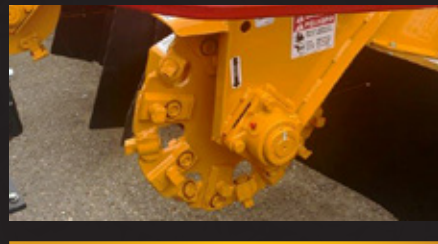
# WEAR PARTS

## MODEL SG-40

TRACK STUMP GRINDER



(Greenteeth Wheel)



(Revolution Wheel)

### MODEL SG-40

BANDIT PART NUMBER	DESCRIPTION	QUANTITY
<b>NEW REVOLUTION WHEEL</b>		
900-9912-22	Hex Tooth	24
900-9909-99	Tooth Nut	24
900-9912-78	Weld in Pocket	8
900-9912-25	Pinned Pocket	8
900-9912-26	Unpinned Pocket	8
<b>BANDIT WHEEL WITH GREENTEETH</b>		
900-9926-71	900 Series Tooth w/ Nut & Spacer	8
900-9907-86	900 Series Angle Pocket	8
900-9907-42	900 Series Pocket Bolt	4
900-9916-03	900 Series Pocket Bolt for Pocket w/ Spacer	4
900-9938-57	900 Series Angle Pocket Spacer	4

# Additional Wear Parts

## ENGINE FILTERS (KOHLER 38)

PART NUMBER	DESCRIPTION	QUANTITY
900-6912-37	Fuel Filter	1
900-6903-73	Oil Filter	1
900-6924-18	Air Filter Primary	1
900-6924-17	Air Filter Secondary	1

## HYDRAULIC FILTERS

PART NUMBER	DESCRIPTION	QUANTITY
900-3951-32	In Tank Hydraulic Filter	1
900-3944-78	Suction Screen	1

## BELTS

PART NUMBER	DESCRIPTION	QUANTITY
900-1908-36	Cutter Wheel Drive Belt	1
900-1924-55	Engine Drive Belt	1
900-1924-79	Pump Belt	1



(Fuel Filter)



(Oil Filter)



(Primary Air Filter)



(Secondary Air Filter)

Place Dealer  
Contact Info  
Sticker



6750 MILLBROOK ROAD • REMUS, MICHIGAN 49340  
 WWW.BANDITCHIPPERS.COM • SALES@BANDITCHIPPERS.COM  
 P: 1-800-952-0178 • F: 1-989-561-2273

