

WEAR PARTS

MODEL 65XP

DISC-STYLE CHIPPER



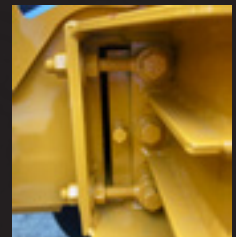
(Model 65XP Knife)



(Banded Belt)



(Hydraulic Filter)



(Anvil)

MODEL 65XP

| BANDIT PART NUMBER | DESCRIPTION | QUANTITY |
|--------------------|----------------------------|----------|
| 900-9902-00 | Knife - 1/2" x 4" x 7-1/4" | 2 |
| 900-4901-04 | Knife Bolt - 1/2" x 2" | 6 |
| 900-4900-27 | Knife Nut - 1/2" - | 6 |
| 626-0500-69 | Anvil w/ Hardware | 1 |
| 900-1918-17 | Banded Belt - 2/BX60 | 1 |
| 900-3900-10 | AE-10 Hydraulic Filter | 1 |

Engine Filters

*** Below are the engine filter part numbers for the various engines offered on the Model 65XP ***

| MODEL 65XP | | | | |
|--------------|-------------|-------------|---------------------|-----------------------|
| ENGINE | FUEL FILTER | OIL FILTER | AIR FILTER, PRIMARY | AIR FILTER, SECONDARY |
| Kohler 25 HP | 900-6912-37 | 900-6903-61 | 900-6924-18 | 900-6924-17 |
| Kohler 37 HP | 900-6912-37 | 900-6903-73 | 900-6924-18 | 900-6924-17 |
| Briggs 35 HP | 900-6952-36 | 900-6924-09 | 900-6924-18 | 900-6924-17 |



(Fuel Filter)



(Oil Filter)



(Primary Air Filter)



(Secondary Air Filter)

Place Dealer
Contact Info
Sticker



6750 MILLBROOK ROAD • REMUS, MICHIGAN 49340
 WWW.BANDITCHIPPERS.COM • SALES@BANDITCHIPPERS.COM
 P: 1-800-952-0178 • F: 1-989-561-2273

