

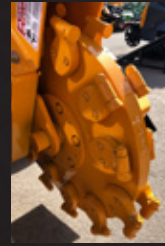
WEAR PARTS

MODEL 2550

RUBBER TIRE STUMP GRINDER



(Revolution Wheel)



(Greenteeth Wheel)

MODEL 2550

BANDIT PART NUMBER	DESCRIPTION	QUANTITY
BANDIT WHEEL WITH GREENTEETH		
900-9938-59	900 Series Tooth w/ Nut	18
900-9907-86	900 Series Angle Pocket	12
900-9907-87	900 Series Straight Pocket	6
900-9907-14	900 Series Pocket Bolt	18
NEW REVOLUTION WHEEL		
900-9912-23	Hex Side Tooth	16
900-9912-24	Hex Lead Tooth	8
900-9909-99	Tooth Nut	24
900-9912-78	Weld in Pocket	8
900-9912-25	Pinned Pocket	8
900-9912-26	Unpinned Pocket	8

Additional Wear Parts

*** Below are the engine filter part numbers for the various engines offered on the Model 2550 ***

ENGINE FILTERS (KUBOTA 49 DIESEL)

PART NUMBER	DESCRIPTION	QUANTITY
900-6969-95	Fuel Filter	1
900-6980-88	Fuel Separator	1
900-6937-01	Oil Filter	1
900-6969-96	Air Filter Primary	1
900-6969-97	Air Filter Secondary	1

ENGINE FILTERS (KUBOTA 49 GAS)

PART NUMBER	DESCRIPTION	QUANTITY
900-6923-88	Fuel Filter	1
900-6913-67	Oil Filter	1
900-6934-39	Air Filter Primary	1
900-6936-65	Air Filter Secondary	1

ENGINE FILTERS (KOHLER 49 DIESEL)

PART NUMBER	DESCRIPTION	QUANTITY
900-6953-41	Fuel Filter	1
900-6953-42	Oil Filter	1
900-6977-02	Air Filter Primary	1
900-6977-03	Air Filter Secondary	1

HYDRAULIC FILTERS

PART NUMBER	DESCRIPTION	QUANTITY
900-3951-32	In Tank Hydraulic Filter	1
900-3944-78	Suction Screen	1
900-3944-57	Pump Charge Pressure Filter	1

Place Dealer
Contact Info
Sticker



6750 MILLBROOK ROAD • REMUS, MICHIGAN 49340
 WWW.BANDITCHIPPERS.COM • SALES@BANDITCHIPPERS.COM
 P: 1-800-952-0178 • F: 1-989-561-2273

