

**EXTENDO 1544<sup>X</sup>**

**PETTIBONE®**

# 1544<sup>X</sup> **EXTENDO**

The Pettibone® Extendo 1544X provides a maximum lift capacity of 15,000 pounds and maximum lift height of 44 feet. Equipped with efficient hydraulics that provide exceptional controllability, the Extendo 1544X delivers enhanced lifting capabilities for highway construction, pipe yards and building sites.

**X-SERIES**

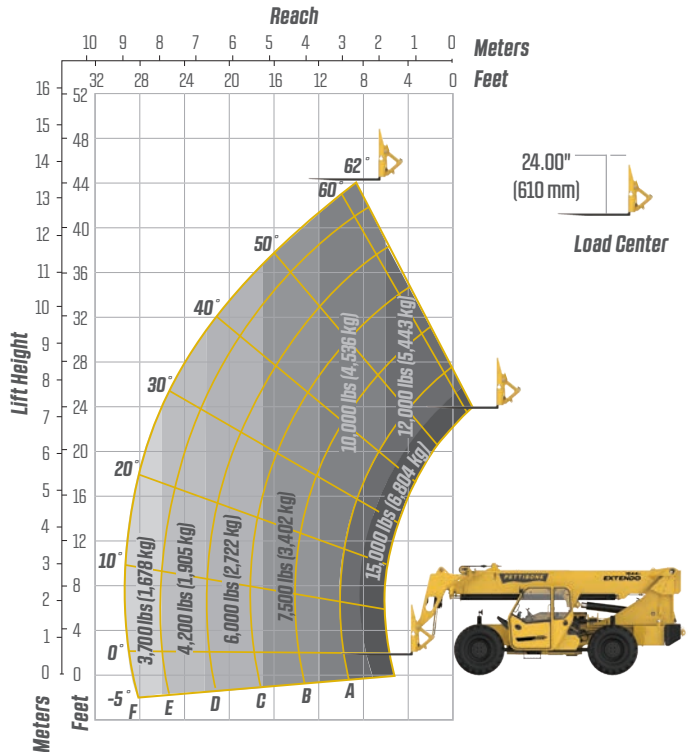


# PRELIMINARY SPECIFICATIONS



DIMENSIONS		
1	Overall Height	9' (274 cm) boom down
2	Fork Carriage	48" (122 cm) standard
3	Ground Clearance	19" (48 cm)
4	Overall Length	22' 11" (699 cm) to fork frame
	Overall Width	8' 6" (259 cm)
	Pallet Forks	2.25x4x48" standard
	Approximate Operating Weight	32,050 lbs (14,538 kg) with foam-filled tires
ENGINE		
	Model/Power	117 HP (87 kW) Cummins® QSF3.8 Tier 4 turbo diesel with DEF and SCR aftertreatment
	DEF Tank	5 gal. (19 L)
	Fuel Tank	30 gal. (114 L)
HYDRAULICS		
	System	Pressure comp, axial piston pump
	Features	Fully proportional functions, auxiliary boom tip hydraulics, quick disconnect for attachments
	Controls	Single joystick, pilot operated
PERFORMANCE		
	Max Load Capacity	15,000 lbs (6,804 kg)
	Maximum Lift Height	44' (1,341 cm)
	Landing Height	41' (1,250 cm)
	Maximum Forward Reach	29' (884 cm) at 24" LC
	Below Grade Reach	3' (91 cm)
	Maximum Travel Speed	15.2 mph (24.5 km/h)
	Turning Radius	14' 4" (437 cm)
	Drawbar Pull (GVW)	28,600 lbs (12,973 kg)
	Frame	20° of leveling (10° right and left), rear axle stabilization system
	Transmission	Dana® VDT12000 Series, 3-speed Powershift, forward & reverse
	Axles	Dana 223 Series: 4-wheel drive, 45% limited slip front differential
	Steering	4 wheel, 2 wheel, and crab steer
	Brakes	Oil-immersed inboard disc service brakes, integral front SAHR park brake
	Tires	14.00 x 24, 16 ply, G2 tread foam standard
	Boom	3-section, slide pad; automatic fork leveling without slave cylinder

# LIFT PERFORMANCE



# FEATURES & OPTIONS

OPERATOR CAB		
X-Command® telematics	Adjustable suspension seat with seat belt	Split door design
Adjustable suspension seat with seat belt	Single multifunction hydraulic joystick	Flat, bolt-in glass
Single multifunction hydraulic joystick	Analog/LCD gauge cluster	Lockable storage area under seat
AVAILABLE ATTACHMENTS		
Pallet, lumber or block forks	Utility bucket	Standard carriage
Side tilt carriage (+/- 10°)	Truss boom	Hydraulic fork positioning carriage
		Pipe and pole baler
OPTIONS		
Premium gauge cluster w/7" digital display	Rear-view camera system	Various tire tread options available
High output LED lighting package	Solid tires	Enclosed cab, HWD (A/C available)
		Sling hook
		Bolt-on rear pintle hitch

\* Specifications are subject to change.

**PETTIBONE®**

## PETTIBONE, LLC

1100 Superior Avenue  
Baraga, MI 49908

P: 906.379.4529  
info@gopettibone.com  
www.gopettibone.com

**2 - 5  
WARRANTY**

**2 Years/2,000 Hours** : Bumper-to-bumper  
**5 Years/5,000 Hours** : Machine structure

## WARRANTY