

TRAVERSE T1246X

PETTIBONE

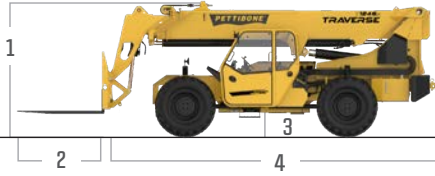
T1246X TRAVERSE

The Pettibone® Traverse™ T1246X features an industry-exclusive extendable, traversing boom that moves loads by traveling horizontally. Providing up to 70 inches of horizontal boom transfer, the Traverse allows users to precisely place loads at full lift height without having to coordinate multiple boom functions.

X-SERIES



SPECIFICATIONS



DIMENSIONS

1	Overall Height	9' (274 cm) boom down
2	Fork Carriage	48" (122 cm) standard
3	Ground Clearance	19" (48 cm)
4	Overall Length	22' 11" (699 cm) to fork frame
	Overall Width	8' 6" (259 cm)
	Pallet Forks	2.25x4x48" standard
	Approximate Operating Weight	29,750 lbs (13,494 kg) without outriggers 31,250 lbs (14,175 kg) with optional outriggers

ENGINE

Model/Power	117 HP (87 kW) Cummins® QSJ3.8 Tier 4 turbo diesel with DEF and SCR aftertreatment
DEF Tank	5 gal. (19 L)
Fuel Tank	30 gal. (114 L)

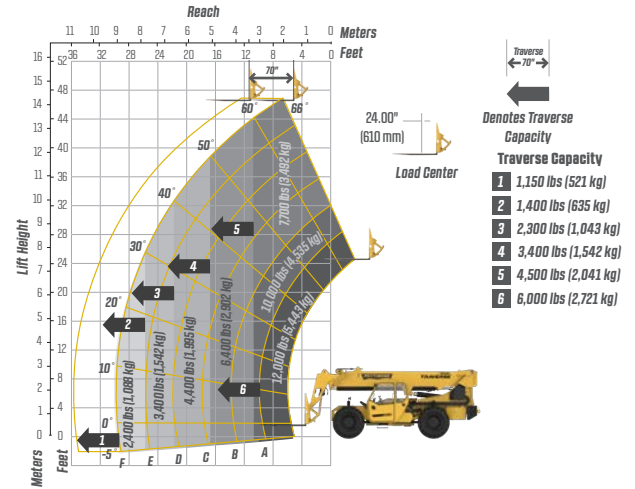
HYDRAULICS

System	Pressure comp, axial piston pump
Features	Fully proportional functions, auxiliary boom tip hydraulics, quick disconnect for attachments
Controls	Single joystick, pilot operated

PERFORMANCE

Max Load Capacity	12,000 lbs (5,443 kg)
Maximum Lift Height	46' 6" (1,417 cm)
Landing Height	46' 6" (1,417 cm)
Maximum Forward Reach	35' 10" (1,092 cm) at 24" LC 30' (914 cm) non-traversed
Below Grade Reach	3' 2" (97 cm)
Maximum Travel Speed	15.2 mph (24.5 km/h)
Turning Radius	14' 4" (437 cm)
Drawbar Pull (GVW)	29,100 lbs (13,200 kg)
Frame	20° of leveling (10° right and left), rear axle stabilization system
Transmission	Dana® VDT12000 Series, 3-speed Powershift, forward & reverse
Axles	Dana 223 Series: 4-wheel drive, 45% limited slip front differential
Steering	4 wheel, 2 wheel, and crab steer
Brakes	Oil-immersed inboard disc service brakes, integral front SAHR park brake
Tires	14.00 x 24, 16 ply, G2 tread air-fill standard
Boom	3-section, slide pad; automatic fork leveling without slave cylinder

LIFT PERFORMANCE



FEATURES & OPTIONS

OPERATOR CAB

X-Command® telematics Adjustable suspension seat with seat belt Single multifunction hydraulic joystick Analog/LCD gauge cluster	Split door design Flat, bolt-in glass Lockable storage area under seat
-------------------------------------------------------------------------------------------------------------------------------------------	------------------------------------------------------------------------------

AVAILABLE ATTACHMENTS

Pallet, lumber or block forks Utility bucket Side tilt carriage (+/- 10°) Truss boom	Standard carriage Hydraulic fork positioning carriage 10' tower w/ standard carriage
-----------------------------------------------------------------------------------------------	--------------------------------------------------------------------------------------------

OPTIONS

Premium gauge cluster w/7" digital display Rear-view camera system High output LED lighting package Solid or foam filled tires Various tire tread options available	Enclosed cab, HWD (A/C available) Sling hook Bolt-on rear pintle hitch Axle-mounted outriggers
---------------------------------------------------------------------------------------------------------------------------------------------------------------------------------	---------------------------------------------------------------------------------------------------------

* Specifications are subject to change.

PETTIBONE®

PETTIBONE, LLC

1100 Superior Avenue
Baraga, MI 49908

P: 906.379.4529
info@gopettibone.com
www.gopettibone.com

**2 - 5
WARRANTY**

2 Years/2,000 Hours : Bumper-to-bumper
5 Years/5,000 Hours : Machine structure

WARRANTY